

Contents

Program at a Glance 2

Floor Map 4

General Information 8

Program 16

Program at a Glance

[Day 1] July 19 (Sat), 2025 Port Messe Nagoya

	8:30	9:00	9:30	10:00	10:30	11:00	11:30	12:00	12:30	13:00
Room 4 (4F・Hall B)		8:40~9:40		9:45~10:45		10:50~11:50				
		AsiaPrevent Oral 1 Cardiovascular disease and Frailty Chairs : Junichi Funata Chan Joo Lee		AsiaPrevent Oral 2 Cardiac rehabilitation/ Exercise test Chairs : Junji Iwasaka Maria Rosan Trani		AsiaPrevent Oral 3 Prevention and disease management Chairs : Masakazu Saitoh Mohamad Yatim SAARI				
Poster Room (1F・Hall B)		8:30~15:45 Mounting / Browse								

Program at a Glance

[Day 2] July 20 (Sun), 2025 Port Messe Nagoya

	8:30	9:00	9:30	10:00	10:30	11:00	11:30	12:00	12:30	13:00
Room 4 (4F・Hall B)			9:00~10:00		10:10~11:10		11:10~11:25			
			AsiaPrevent Expert Lecture 2 Alternatives in Cardiac Rehabilitation in Asia Chairs : Yutaka Kimura Dayi Hu		AsiaPrevent Expert Lecture 3 Emerging Trends in Digital and Sports Cardiology in Asia Chairs : Yoshihiro Fukumoto Ngai Yin Chan		Awards Ceremony			

13:30	14:00	14:30	15:00	15:30	16:00	16:30	17:00	17:30	18:00	18:30	19:00
		14:30~15:30 AsiaPrevent Expert Lecture 1 Exercise Prescription and Training for Heart Failure in Asia Chairs : Yoshitaka Iso Xiaoping Meng		15:40~17:00 JACR-EAPC Joint Session Social Factors Affecting Cardiac Rehabilitation Chairs : Ana Abreu Yasuhiko Sakata							
					15:45~17:25 AsiaPrevent Poster						

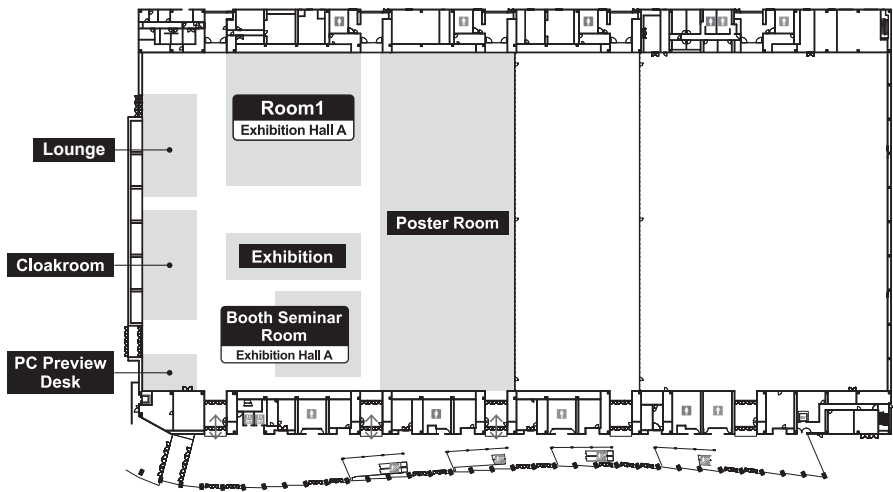
AsiaPrevent Poster

No	Session Theme	Chair	Time
1	Exercise physiology / Exercise test	Michitaka Kato Ssu-Yuan Chen	15:45~16:35
2	Cardiac rehabilitation / Prevention	Yutaka Miura Basuni Radi	15:45~16:35
3	Physical therapy / Adherence	Shinji Sato Ngai Yin Chan	16:35~17:25
OHSP	Overseas high score poster	Masanori Kanazawa Asami Ogura	16:35~17:25

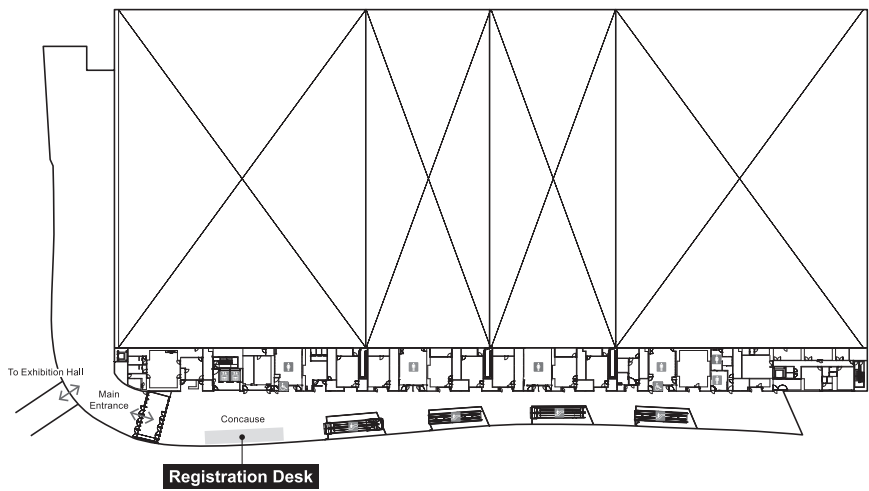
13:30	14:00	14:30	15:00	15:30	16:00	16:30	17:00	17:30	18:00	18:30	19:00

FLOOR MAP
First Exhibition Hall

●1F

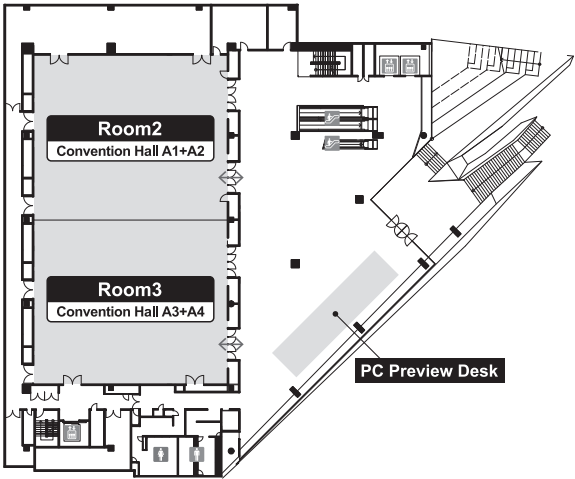


●2F

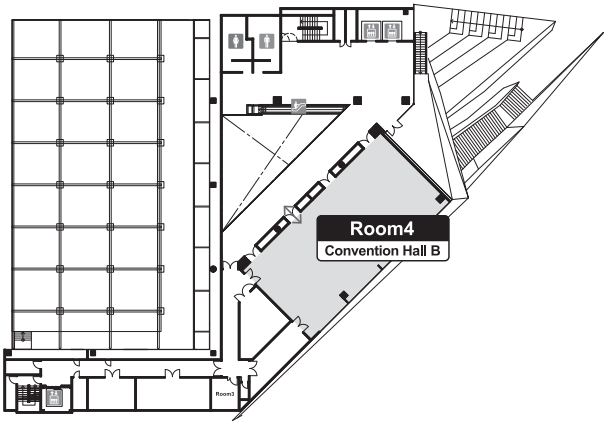


Convention Hall

●3F

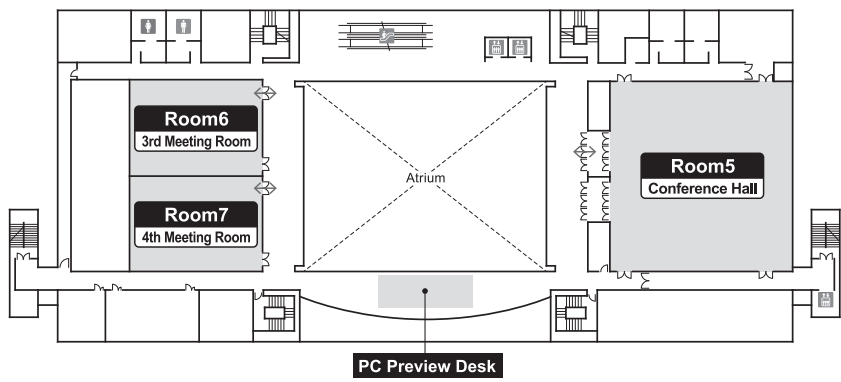


●4F

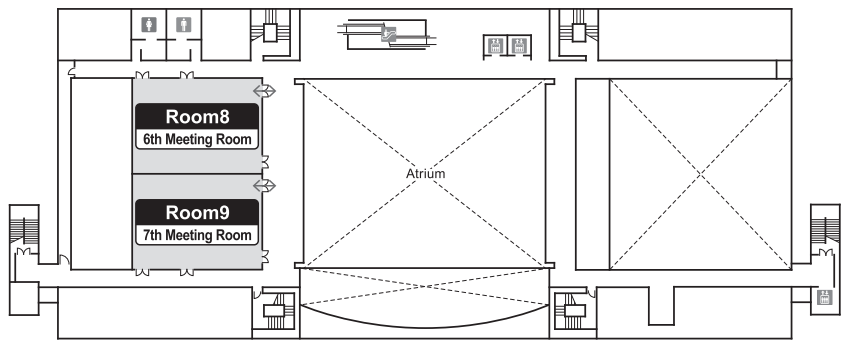


Main Hall

●3F

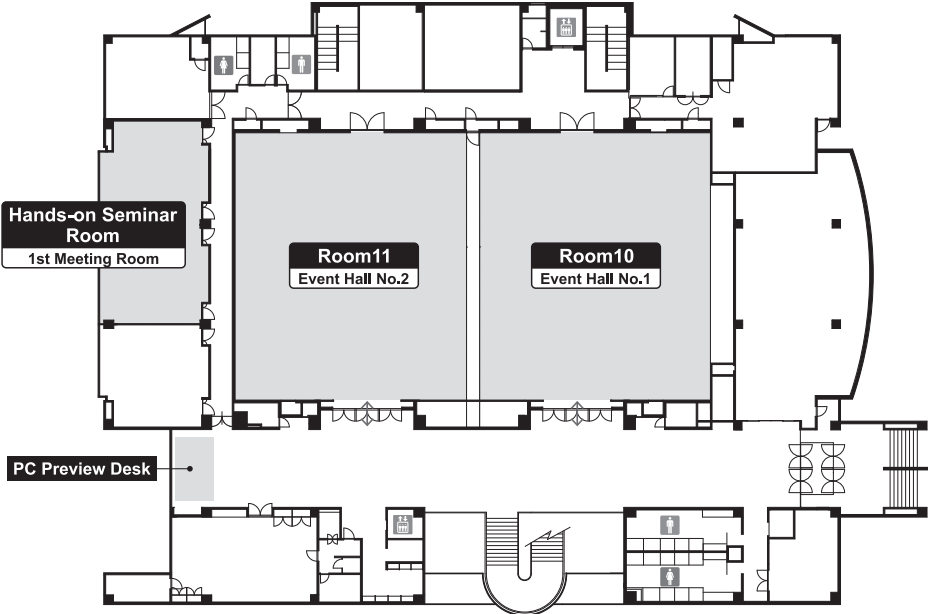


●4F



Event Hall

●2F



General Information

Dates

July 19 (Sat) - 20 (Sun), 2025

AsiaPrevent will be held on both July 19 (Sat) and July 20 (Sun).

Venues

Port Messe Nagoya (Nagoya International Exhibition Hall)

2-2, Kinjofuto, Minato-ku, Nagoya, Aichi 455-0848, Japan

URL: <https://portmesse.com/en>

Congress Chairperson

Hideo Izawa, MD, PhD

Department of Cardiology, Fujita Health University

Registration

Registration fees for participants from outside Japan are as follows and will be payable at the venue reception.

Doctors / Regular	1,000 JPY
Medical Staff / Resident	1,000 JPY
Students	1,000 JPY

Place: Port Messe Nagoya, Hall No.1 Building, 2F Robby

7/19 (Sat) 8:00-18:30

7/20 (Sun) 8:00-16:30

Cloak

Valuables and umbrellas cannot be stored.

Date and Time	Place
7/19 (Sat) 8:00-19:00	Port Messe Nagoya, Hall No.1 Building, 1F Exhibition Hall
7/20 (Sun) 8:00-17:30	

Rest Area

Place: Port Messe Nagoya, Hall No.1 Building, 1F Exhibition Hall

Headquarters

Place: Port Messe Nagoya, Hall No.1 Building, 1F Exhibition Hall, Staff Room B

Presentation Guidelines

Standby

Submit and preview your presentation data (PPT) at the PC Preview Desk at least 30 min before the beginning of your session. Please come to the next speaker's seat at the front left of the venue 15 minutes before.

PC Preview Desk

Date and Time		Place
7/19 (Sat)	7:45-17:30	Port Messe Nagoya, Convention Hall, 3F Robby
7/20 (Sun)	7:45-16:00	

Equipment to be installed at the venue

OS: Windows11

Applications: Microsoft Power Point Office 365

Windows

If your presentation file is made using Windows, bring your own laptop or USB memory.

Macintosh

If your presentation file is made using Macintosh, bring your own laptop with a HDMI and power adapter. Bringing only USB memory is NOT available.

File Name

The title of your presentation file should be "session title_program No._your name".

File Management

Presentation files must be in Windows Power Point Office 365. The resolution is Full HD (1920 x 1080), and the screen ratio is 16:9. Use only standard OS fonts such as Arial, **ArialBlack**, ArialNarrow, Century, Century Gothic, Courier, Courier New, Georgia, Times New Roman.

Video

If you use video, bring your own PC. We recommend MP4 format which can be played on Windows Media Player 12.

Operation

In presentation, speakers should operate keypad / mouse with monitor. Don't use Presentation Tools function in PowerPoint.

Bringing Your Laptop

Bring a USB memory for backup data. Bring a power adapter if you use your own laptop.

Connection is HDMI. Bring your laptop to operate seat at least 20 min before the beginning of your session. Turn off a screen saver function, energy saver, virus checker and password features in advance (as well as hot corner of Macintosh). Don't bring up your laptop on the stage.

Instruction for Oral sessions

Venue

Room4 (Port Messe Nagoya, Convention Hall, 3F Robby 4F, Convention Hall B)

For Chairs

1. Chairs are requested to be seated on the Next Chairs Seat at the front right of the venue, no later than 15 mins. prior to your session.
2. There is no announcement to call attention to start the session. Session composition is to be controlled by the chairs. Chairs are asked to ensure all sessions start and finish punctually as scheduled (Presentation 6 mins. Discussion 2 mins).
Additional remarks, discussions and proceedings will be left entirely up to chairs' decisions.
3. In case that the previous session finished earlier than scheduled, please wait to commence your session until the scheduled time comes.

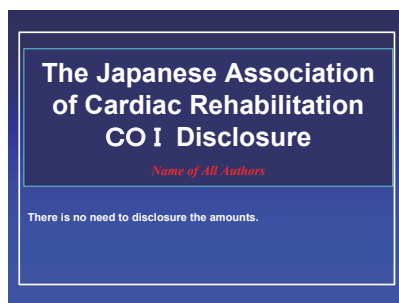
For Speakers

1. For speaker, the allocated time of the speech is 6 mins., followed by 2 mins. discussion.
Only computer presentations will be available for the oral sessions. No slides or OHP shall be used. Please prepare presentation data in English. Screen ratio is 16:9 in all Session rooms.
2. The 1st slide should be the COI disclosure in your presentation.

<Examples>



COI to disclose



No COI to disclose

3. Audio-Visual Materials

- Please save your data on a USB memory, and deliver it to the PC Preview Desk. Windows is the only operating system available for the presentations. If you have prepared the presentation data on a Macintosh, you are required to bring your own PC.
- * For those who want to show a video, please bring your own personal computer. You are also required to make sure to check that your data has not been infected by any virus in advance by using the latest version of the security software.
- Please submit your data at the PC Preview Desk, and check whether all the data are shown properly.
- Even if you use your own PC, you are required to check your presentation data at the PC Preview Desk and bring your PC to the operation desk in the session room 30 mins. prior to your session starts. Following the conclusion of your session, we will return your PC at the operation desk. Please come to the operation desk promptly to claim your PC.
- If you need any assistance with the set-up, please do not hesitate to ask for the assistance at the PC Preview Desk.
- When you are next one in line to give your presentation, please be seated on the Next Speakers Seat.

4. Speakers are requested to present their data at least 30 mins. prior to their presentation.

Instruction for Poster Session

Venue

AsiaPREvent Poster Area (Port Messe Nagoya, Hall No.1 Building, 1F Exhibition Hall)

For Speakers

1. Posters will be placed for two days.
2. Please prepare presentation materials (posters) in English.
3. The poster should contain the COI disclosure statement.

<Examples>

【Disclosure Statement of COI】

The authors have financial conflicts of interest disclose concerning the study, explain below.

Trust research/joint research funds: ○○ pharmaceutical company

Scholarship funds: × × pharmaceutical company

Affiliation with Endowed Department: yes (△△ pharmaceuticals)

COI to disclose

【Disclosure Statement of COI】

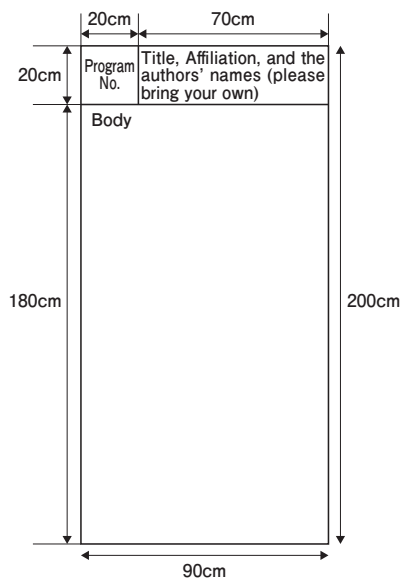
The authors have no financial conflicts of interest disclose concerning the study.

No COI to disclose

4. Presentation 5 mins. Discussion 2 mins.
5. Please check the Poster Session Area on this program to find the location of your assigned poster board.
 - Presenters are requested to mount their posters on the assigned board.
 - Poster panels are 210 cm high x 90 cm wide. Please refer to the diagram and use large-sized characters for easy reading.
 - 20 cm high x 70 cm wide of the upper part of the panel will be used for labeling your Poster Title, Affiliation, and the authors' names, which should be prepared by presenters.

Poster Posting and Removal times are scheduled as below. Please note that any posters remaining over the removal time will be disposed of by the Secretariat.

Day	Mounting / Browse	Presentation	Removal
July. 19 (Sat.)	8:30 – 15:45	15:45 – 17:55	
July. 20 (Sun.)	8:30 – 15:00	15:00 – 17:10	17:10 – 17:40



Notice

1. **Smoking is NOT permitted** in Port Messe Nagoya.
2. Turn off your mobile phone before entering the lecture rooms and Poster & Exhibition Hall.
3. In principle, taking photographs of slides and posters, recording and picture recording in the lecture rooms are prohibited without prior permission.
4. Cool Biz attire such as no tie will be permitted during the Meeting. However, please refrain from wearing T-shirts, jeans, sandals. Men should wear shirt with collar. For women office casual clothing is preferable.

Day 1 July 19 (Sat), 2025

14:30~15:30 Room 4 (4F • Hall B)

AsiaPrevent Expert Lecture1 [Exercise Prescription and Training for Heart Failure in Asia]

Chairs : Yoshitaka Iso (Division of Cardiology, Showa Medical University Fujigaoka Hospital)
Xiaoping Meng (The Affiliated Hospital of Changchun University of Chinese Medicine, China)

APEL1-1 Intracardiac and Extracardiac Benefits of Breathing, Endurance and Strength Training (BEST) for Patients with Heart Failure

○Basuni Radi, Kevin Triangto

National Cardiovascular Center Harapan Kita, Indonesia

APEL1-2 Effective inpatient cardiac rehabilitation for the aged era

○Makoto Murata

National Cerebral and Cardiovascular Center Hospital

APEL1-3 Cardiac Rehabilitation after Heart Transplantation and Left Ventricular Assist Device

○Chan Joo Lee

Division of Cardiology, Severance Hospital, Yonsei University College of Medicine

Day 2 July 20 (Sun), 2025

9:00~10:00 Room 4 (4F • Hall B)

AsiaPrevent Expert Lecture2 [Alternatives in Cardiac Rehabilitation in Asia]

Chairs : Yutaka Kimura (Kansai Medical University)
Dayi Hu (People's Hospital of Peking University, China)

APEL2-1 The Health Promotion Effect of Tai Chi Chuan and Its Applications in Cardiac Rehabilitation

○Ssu-Yuan Chen

Cardiovascular and Pulmonary Rehabilitation Center, Division of Physical Medicine & Rehabilitation, Fu Jen Catholic University Hospital, Fu Jen Catholic University, Taiwan

APEL2-2 Integration of Qigong in Cardiac Rehabilitation

○Saari Mohamad Yatim

Serdang Hospital, Malaysia

APEL2-3 Yoga for Cardiovascular Diseases

○Kushal Madan

Sir Ganga Ram Hospital, India

Day 2 July 20 (Sun), 2025

10:10~11:10 Room 4 (4F • Hall B)

AsiaPrevent Expert Lecture3
[Emerging Trends in Digital and Sports Cardiology in Asia]

Chairs : Yoshihiro Fukumoto (Cardiovascular Medicine, Kurume University School of Medicine)

Ngai Yin Chan (Princess Margaret Hospital, Hong Kong)

APEL3-1 Smartphone-based photoplethysmography screening for atrial fibrillation in Hong Kong: The AF-SEEN study

○Ngai-Yin CHAN

Department of Medicine & Geriatrics, Princess Margaret Hospital, Hong Kong

APEL3-2 Current State of Sports Cardiology in the Philippines

○Maria Rosan Trani^{1,2}

¹*Immediate Past Chairman, Council of Cardiac Rehabilitation and Sports Cardiology,*

²*Philippine Heart Association*

APEL3-3 Use of digital technology in heart failure management and cardiac rehabilitation in Japan

○Takashi Yokota

Hokkaido University

Day 1 July 19 (Sat), 2025

15:40~17:00 Room 4 (4F • Hall B)

JACR-EAPC Joint Session [Social Factors Affecting Cardiac Rehabilitation]

Chairs : Ana Abreu (Santa Maria Hospital, Lisbon, Portugal)

Yasuhiko Sakata (National Cerebral and Cardiovascular Center)

Discussants : Lino Manuel Ribeiro Patrício (Hospital Espírito Santo in Évora at the University of Évora,
Évora, Portugal)

Yasuharu Matsumoto (Tagawa Hospital)

JACR-EAPC-1 Social Determinants of Health and Psychosocial Stress: Biological Mechanisms for Cardiovascular Disease

○Ana Abreu

Santa Maria Hospital, Lisbon, Portugal

JACR-EAPC-2 Social Determinants of Cardiovascular Disease in Japan: Current Status and Challenges

○Atsushi Mizuno

Department of Cardiovascular Medicine, St Luke's International Hospital

JACR-EAPC-3 Social Determinants of Cardiovascular Disease in Europe: Current Status and Challenges

○Nicolle Kraenkel^{1,2,3}

¹Charité-Universitätsmedizin Berlin, Department of Cardiology, Campus Benjamin Franklin, Berlin,

Germany, ²DZHK (German Centre for Cardiovascular Research) , Partner Site Berlin, Berlin, Germany,

³Friede Springer Cardiovascular Prevention Centre @ Charité, Berlin, Germany

JACR-EAPC-4 Comprehensive home-based cardiac rehabilitation as an alternative approach for heart failure

○Takeo Fujino^{1,2}, Yuta Nagatomi³, Tomoyuki Nezu³, Tae Higuchi³, Shoei Yamamoto²,
Kayo Misumi², Keisuke Shinohara², Toru Hashimoto², Shouji Matsushima²,
Akira Shiose⁴, Kohtaro Abe²

¹Department of Advanced Cardiopulmonary Failure, Kyushu University, ²Department of Cardiovascular

Medicine, Kyushu University Hospital, ³Department of Rehabilitation Medicine, Kyushu University Hospital,

⁴Department of Cardiovascular Surgery, Kyushu University Hospital

Day 1 July 19 (Sat), 2025

8:40~9:40 Room 4 (4F • Hall B)

AsiaPrevent Oral1
[Cardiovascular disease and Frailty]

Chairs : Junichi Funata (NHO Ehime Medical Center)

Chan Joo Lee (Severance Hospital, Yonsei University)

AP01-1 Factors contributing to intensive care unit-acquired weakness in patients with acute decompensated heart failure

○Bojian Wang, Pengyu Cao

Changzhou Medical Center, Nanjing Medical University

AP01-2 Effect of external counterpulsation on quality of life and myocardial oxygen consumption in patients with ischemia and non-obstructive coronary artery disease

○Kanghua Zeng, Shuchun Cai

Nanchang University

AP01-3 Association between individual items on the K-frail questionnaire and exercise capacity in heart failure patients.

○Chan Joo Lee, Taeil Yang, Jooyeon Lee, Moojun Kim, Jaewon Oh, Seok-Min Kang

Division of Cardiology, Severance Hospital, Yonsei University College of Medicine

AP01-4 Low leg strength predicts low exercise capacity and rehospitalization in patients with advanced heart failure with left ventricular assist device

○Takumi Noda¹, Yukihiko Shimada¹, Mayuko Harada², Hiromasa Ikariyama¹,
Noriyuki Fukui¹, Kazuya Yamamoto¹

¹*Department of Cardiovascular Rehabilitation, National Cerebral and Cardiovascular Center,*

²*Department of Transplant Medicine, National Cerebral and Cardiovascular Center*

AP01-5 Association between self-monitoring using a web-based application and weight loss in obese patients after percutaneous coronary intervention

○Kuya Funaki¹, Sumio Yamada¹, Hironobu Ashikawa¹, Ryo Kondo¹, Takuji Adachi²,
Tetsuya Amano¹

¹*Department of Cardiology, Aichi Medical University,*

²*Department of Integrated Health Sciences, Nagoya University Graduate School of Medicine*

AP01-6 Impact of Geriatric Nutritional Risk Index on Clinical Outcomes After Endovascular Therapy in Patients with Lower Extremity Arterial Disease

○Koya Takino^{1,2}, Yoji Kuze², Masahiro Hori², Masayasu Nakagawa³

¹*Toyohashi Sozo University School of Health Sciences, Department of Physical Therapy,*

²*Gifu Heart Center. Department of Cardiac Rehabilitation, ³Gifu Heart Center. Department of Cardiology*

AP01-7 Exploring the Relationship Between Cerebral Blood Flow and Oral Exercise Using a Head-Mounted Cerebral Blood Flow Detector

○Chun Hsien Li, Willy Chou, Yi Chou

Chi Mei Medical Center

Day 1 July 19 (Sat), 2025

9:45~10:45 Room 4 (4F • Hall B)

AsiaPrevent Oral2 [Cardiac rehabilitation/Exercise test]

Chairs : Junji Iwasaka (Chokyu Hospital)

Maria Rosan Trani (Chong Hua Hospital)

AP02-1 Clinical Observation On The Effects Of Fructose Diphosphate Sodium On Patients Undergoing Cardiac Rehabilitation After Taking The Drug For One Month

○Bo Li

The Affiliated Hospital of Changchun University of Chinese Medicine

AP02-2 Cardiac Rehabilitation vs. Usual Care therapy on Left Ventricular Ejection Fraction outcomes in Patients with Breast Cancer undergoing Chemotherapy: A Meta-Analysis

○Mary Martinæ Lim Miro, Maria Rosan Trani

Perpetual Succour Hospital

AP02-3 Comparative analyses of predictive equations for peak oxygen uptake in Japanese patients with cardiovascular disease

○Asami Ogura^{1,2}, Kazuhiro P Izawa², Hideto Tawa³, Masaaki Wada¹, Ikko Kubo², Masashi Kanai²

¹Department of Rehabilitation, Sanda City Hospital,

²Department of Public Health, Graduate School of Health Sciences, Kobe University,

³Department of Cardiology, Sanda City Hospital

AP02-4 Effects of small community walking intervention on physical activity, well-being, and social capital among older patients with cardiovascular disease in the maintenance phase: a randomized controlled trial

○Ryo Yamashita¹, Shinji Sato², Yasutomo Sakai³, Kotaro Tamari³, Akira Nozuhara⁴, Tomonori Kanazawa⁵, Shigeki Tsuzuku⁶, Yoshinori Yamanouchi⁷, Shinsuke Hanatani⁸, Taishi Nakamura⁹, Eisaku Harada^{1,10}, Kenichi Tsujita¹¹

¹Kumamoto Institute of Total Fitness, Kumamoto, Japan,

²Department of Sport and Medical Science, Teikyo University, Tokyo, Japan,

³Department of Physical Therapy, Teikyo Heisei University, Tokyo, Japan, ⁴Nozuhara Clinic, Kumamoto, Japan,

⁵Seijino Rehabilitation Hospital, Kumamoto, Japan, ⁶Center for Student Success Research and Practice, The

University of Osaka, Osaka, Japan, ⁷Department of Clinical Investigation, Kumamoto University Hospital,

Kumamoto, Japan, ⁸Department of Cardiovascular Medicine, Kumamoto University Hospital, Kumamoto, Japan,

⁹Department of Medical Information Science, Graduate School of Medical Sciences, Kumamoto University,

Kumamoto, Japan, ¹⁰Division of Cardiovascular Medicine, Kumamoto Kinoh Hospital, Kumamoto, Japan,

¹¹Department of Cardiovascular Medicine, Graduate School of Medical Sciences, Kumamoto University, Japan

AP02-5 Comparing Gender Disparities in Enrollment of Cardiac Rehabilitation in a Tertiary Institution

○Maria Rosan Trani, Jeremy Anne Alcazar Cabrera

Chong Hua Hospital

AP02-6 Effects of cardiopulmonary exercise capacity on phase II cardiopulmonary rehabilitation in patients with decompensated heart failure, atrial fibrillation and rapid ventricular response: a case report.

○Chifeng Keng

Tungs Taichung MetroHarbor Hospital

AP02-7 The Effect of Widened Pulse Pressure During Exercise on Exercise Tolerance in Patients after TAVI

○Kotaro Takizawa¹、Junko Sudani¹、Shinya Tajima¹、Daichi Kobayashi¹、Kentaro Hori¹、
Atsuko Nakayama²

¹*Sakakibara Heart Institute, Department of Rehabilitation, Tokyo, Japan,*

²*Sakakibara Heart Institute, Department of Cardiology, Tokyo, Japan*

Day 1 July 19 (Sat), 2025

10:50~11:50 Room 4 (4F • Hall B)

AsiaPrevent Oral3 [Prevention and disease management]

Chairs : Masakazu Saitoh (Department of Physical Therapy, Faculty of Health Science, Juntendo University)

Saari Mohamad Yatim (Serdang Hospital)

AP03-1 Effectiveness and compliance of telemedicine on blood pressure management in post-stroke patients: a systematic review

○Yulin Yang, Pengyu Cao

The Third Affiliated Hospital of Nanjing Medical University

AP03-2 Impact of Cognitive Impairment and Nutritional State at Admission on the Hospital Mortality and Outcomes in Acutely Ill Geriatric Patients

○Hiroshi Yamamoto, Kenichi Ogawa, Yasushi Hisamatsu

Yamamoto Memorial Hospital

AP03-3 Impact of Fatty Liver Risk on the Association Between Weight Loss and HbA1c Improvement through a Mobile App Intervention in Individuals with Diabetes.

○Yuta Hagiwara¹, Takuji Adachi², Masashi Kanai^{1,3}, Shinpei Ishida¹, Takahiro Miki¹

¹PREVENT Inc., ²Nagoya University Graduate School of Medicine, ³Kanazawa University

AP03-4 The Effectiveness of eHealth Applications on Weight Loss Outcomes in Overweight Adults

○Yu-Xuan Wu¹, Wei-Chen Huang², Ssu-Yuan Chen³, Hung-Jui Chuang¹

¹Department of Physical Medicine and Rehabilitation, National Taiwan University Hospital, Taipei, Taiwan.,

²Department of Physical Medicine and Rehabilitation, National Taiwan University Hsinchu Hospital, Hsinchu, Taiwan.,

³Division of Physical Medicine and Rehabilitation, and Cardiovascular and Pulmonary Rehabilitation Center, Fu Jen Catholic University Hospital, New Taipei City, Taiwan.

AP03-5 Acute Myocardial Infarction in Adults Aged 45 and Younger : Risk Profiles and In-Hospital Outcomes

○Aida Yulia Amany, Safir Sungkar, Hari Hendriarti Satoto

Department of Cardiology and Vascular Medicine, Faculty of Medicine, Diponegoro University Dr. Kariadi Central General Hospital Semarang, Indonesia

AP03-6 Strategies To Boost Participation In Phase 2 Cardiac Rehabilitation Program (CRP)

○Saari Mohamad Yatim, Zarifah Yusoff, Farhah Amalina Muhd Ehsan, Madihah Junid, Khairun Nisa Sulaiman, Ili Kamilah Tahir

HOSPITAL SULTAN IDRIS SHAH SERDANG

AP03-7 Hourly Impact of Ambient Temperature on Emergency Heart Failure
Admissions: Implications for Safe Exercise Therapy and Awareness

○Ryohei Fujimoto^{1,2}, Etsuji Suzuki¹, Kazufumi Nakamura³, Takefumi Oka²,
Shinsuke Yuasa³, Takashi Yorifuji¹

¹Okayama University, Graduated School of Medicine, Dentistry and Pharmaceutical Sciences, Epidemiology,

²Tsuyama Chuo Hospital, Cardiovascular Medicine, Cardiovascular Center ,

³Okayama University, Graduated School of Medicine, Dentistry and Pharmaceutical Sciences, Cardiovascular
Medicine

Day 1 July 19 (Sat), 2025

16:35~17:25 Poster Room (1F • Hall B)

AsiaPrevent OHSP [Overseas high score poster]

Chairs : Masanori Kanazawa (Department of Cardiology, Iwate Prefectural Central Hospital)

Asami Ogura (Sanda City Hospital)

APOHSP-1 Impaired Cardiopulmonary Functions In Prepubertal Patients With Kawasaki Disease

○Yen-Sen Lu¹、Ko-Long Lin^{1,2}、Jong-Hau Hsu³、I-Ching Huang¹

¹Department of Physical Medicine and Rehabilitation, Kaohsiung Medical University Hospital, Kaohsiung Medical University, Kaohsiung, Taiwan,

²Department of Physical Medicine and Rehabilitation, Faculty of Medicine, College of Medicine, Kaohsiung Medical University, Kaohsiung, Taiwan ,

³Department of Pediatrics, Kaohsiung Medical University Hospital, Kaohsiung Medical University, Kaohsiung, Taiwan

APOHSP-2 Mechanistic study of the metabolic environmental effect on cardiac regeneration in neonatal mice

○Tongyu Zhang^{1,2}、Pengyu Cao^{1,2}

¹The Third Affiliated Hospital of Nanjing Medical University,

²Changzhou Medical Center, Nanjing Medical University

APOHSP-3 Limitations of Heart Rate as an Indicator for Intensity Conversion Between Cycling and Treadmill Tests at the Ventilatory Threshold

○Po Jia Pao^{1,2}、Hung Jui Chuang²、Tung Chou Li¹

¹Department of rehabilitation, Cathay General Hospital,

²Department of rehabilitation, National Taiwan University Hospital

APOHSP-4 Classic Type Fabry Disease Patients Demonstrated Worse Cardiorespiratory Fitness Than Cardiac Type Patients

○Chia-Yen Grace Hsu¹、Hung-Jui Chuang¹、Ssu-Yuan Chen²

¹National Taiwan University Hospital, ²Fu Jen Catholic University Hospital

APOHSP-5 Benefit of micro T-Wave Alternation from ECG Dispersion Mapping in Developing Modified Jakarta Cardiovascular Calculator as a Novel Risk Predictor Model for the Re-classification of Coronary Artery Disease Probability in High-Risk Population in Indonesia

○Ryan Enast Intan dr¹、Basuni Radi²、Anwar Santoso²、Ade Meidian Ambari²、Budhi Setianto²、Meity Ardiana¹

¹Department of Cardiology and Vascular Medicine, Airlangga University, Indonesia,

²Department of Cardiovascular Prevention and Rehabilitation, National Cardiovascular Center Harapan Kita, Jakarta, Indonesia.

APOHSP-6 Cardiovascular Responses and Perception to High-Load vs. Blood Flow-Restricted Low-Load Resistance Exercise in Patients with Chronic Heart Failure

○Chiao-nan Chen¹、Jia-an Lu¹、Yi-Chen Wu¹、Hung-Yu Chang²

¹Department of Physical Therapy and Assistive Technology, National Yang Ming Chiao Tung University,

²Heart Center, Cheng Hsin General Hospital

Day 1 July 19 (Sat), 2025

15:45~16:35 Poster Room (1F • Hall B)

AsiaPrevent Poster1 [Exercise physiology/Exercise test]

Chairs : Michitaka Kato (Department of Health Science, Medical School, Nagoya City Hospital)

Ssu-Yuan Chen (Fu Jen Catholic University Hospital)

APP1-1 Association between cardiovascular fitness and quality of sleep in young adults.

○Chifeng Keng

Tungs Taichung MetroHarbor Hospital

APP1-2 Exercise-Induced Sinus Node Deceleration in a Patient with Nonobstructive Hypertrophic Cardiomyopathy: A Case Report and Mechanistic Insights

○Shu-mei Yang¹, Ssu-Yuan Chen², Hung-jui Chuang¹

¹*Department of Physical Medicine and Rehabilitation, National Taiwan University Hospital,*

²*Department of Physical Medicine and Rehabilitation, Fu Jen Catholic University Hospital*

APP1-3 Evaluation of the Safety of Early Physical Rehabilitation Therapy for Patients with Acute Heart Failure: An Analysis Using a Target Trial Emulation Framework

○Nozomu Sugimoto¹, Ryutaro Matsugaki², Upul Cooray³, Satoshi Kuhara¹, Takeshi Onoue⁴, Satoru Saeki⁵, Keiji Muramatsu⁶, Kiyohide Fushimi⁷, Shinya Matsuda⁵, Masayasu Murakami⁸, Takaaki Ikeda^{6,8}

¹*Department of Rehabilitation, University Hospital of Occupational and Environmental Health, Kitakyushu, Japan,*

²*Department of Work Systems and Health, Institute of Industrial Ecological Sciences, University of Occupational and Environmental Health, Kitakyushu, Japan ,*

³*National Dental Research Institute Singapore, National Dental Centre Singapore, Singapore ,*

⁴*Second Department of Internal Medicine, University of Occupational and Environmental Health, Kitakyushu, Japan,*

⁵*Department of Rehabilitation Medicine, University of Occupational and Environmental Health, Kitakyushu, Japan,*

⁶*Department of Preventive Medicine and Community Health, School of Medicine, University of Occupational and Environmental Health, Fukuoka, Japan,*

⁷*Department of Health Policy and Informatics, Graduate School of Medical and Dental Sciences, Institute of Science Tokyo, Tokyo, Japan,*

⁸*Department of Health Policy Science, Graduate School of Medical Science, Yamagata University, Yamagata, Japan*

APP1-4 Effect of acute myocardial infarction severity on ventilation efficiency early after percutaneous coronary intervention

○Issei Sugimoto^{1,2}, Ryuji Ninomiya¹, Ken Kaizuka¹, Akira Ishii¹, Takashi Suto¹, Ryo Hata¹, Haruka Kitabatake¹, Yuzuho Kudo¹, Yuto Tonosaki¹, Atsushi Konta¹, Motoi Kushibiki¹, Takumi Saito², Yugo Kimura², Ikue Kondo², Atsunori Itagaki³, Sangun Lee²

¹*Aomori Prefectural Central Hospital,*

²*Aomori University of Health and Welfare Graduate School of Health Sciences ,*

³*Tokyo Metropolitan University*

APP1-5 Decoding the Athlete's Heart: Hemodynamic Echocardiography Insights and Sport-Specific Cardiac Risk Prevention

○Cornelia Ghea Savitri¹、Meity Ardiana^{1,2}、Anudya Kartika Ratri¹、
Patrick Anando Simanjuntak¹

¹ Department of Cardiology and Vascular Medicine, Faculty of Medicine, Universitas Airlangga, Dr. Soetomo General Hospital, 47, Prof. Dr. Moestopo St, Surabaya, East Java, Indonesia 60131,
² Bhayangkara Surabaya Police Officer Hospital, Ahmad Yani St, Surabaya, East Java, Indonesia 60231

APP1-6 Evaluating Hand Grip Strength in Heart Failure Patients: The Impact of Diabetes Mellitus Across Clinical Settings

○Aida Yulia Amany、Lourensia Brigita Astern Praha、Hari Hendriarti Satoto、
David Jonathan Pesireron

Department of Cardiology and Vascular Medicine, Faculty of Medicine, Diponegoro University Dr. Kariadi Central General Hospital Semarang, Indonesia

APP1-7 The Functional Capacity of Various Type of Congenital Heart Disease Patient in Hasan Sadikin Hospital Bandung; a Single-Center Descriptive Study in Developing Country.

○Pepi Nurapipah、Badai Bhatara Tiksnadi、Anggraeni Wendy Astuti、
Charlotte Johanna Cool、Achmad Fitrah Khalid

Hasan Sadikin Hospital Bandung, Indonesia

Day 1 July 19 (Sat), 2025

15:45~16:35 Poster Room (1F • Hall B)

AsiaPrevent Poster2 [Cardiac rehabilitation / Prevention]

Chairs : Yutaka Miura (Ishinomaki Municipal Hospital)
Basuni Radi (National Cardiovascular Center Harapan Kita)

- APP2-1 Effect of Phase 1 Cardiac Rehabilitation on the Health Care Quality of Life in Patients with Cardiovascular Disease: A Single Center Experience
○Jeremy Anne Almadin Alcazar^{1,2}
¹Chong Hua Hospital, ²Cebu South Medical Center
- APP2-2 Impacts of Aggressive Lipid Lowering Therapy on One-year Clinical Outcome and Lipid Profiles after Elective Revascularization with Coronary DES
○Tetsuya Ishikawa, Tomoaki Ukaji, Itaru Hisauchi, Sayuki Kobayashi, Yoshihiko Sakai, Isao Taguchi
Dokkyo Medical University, Saitama Medical Center
- APP2-3 Cardiopulmonary Rehabilitation Following Coronary Artery Bypass Grafting Surgery: A Case Study of a Patient with Visual Impairment
○Wei-Chin Wu¹, Yi-Ting Yang¹, Mei-Ting Wang², Hao-Chun Yu³, Ssu-Yuan Chen²
¹Division of physical therapy, Department of rehabilitation, and Cardiovascular and Pulmonary Rehabilitation Center, Fu-Jen Catholic University Hospital,
²Division of Physical Medicine and Rehabilitation, and Cardiovascular and Pulmonary Rehabilitation Center, Fu Jen Catholic University Hospital, Fu Jen Catholic University,
³Division of Cardiovascular Surgery, Department of Surgery, Fu Jen Catholic University Hospital, Fu Jen Catholic University
- APP2-4 Immediate Effects of Low-Level Laser Therapy on Pain and Cough Capacity in Postoperative Patients with Median Sternotomy: A Pilot Study
○Bo-Yu Chen, Li Chen Pai, Pei Chun Tsai, Chen Ling Chen
Tungs Taichung MetroHarbor Hospital
- APP2-5 Effect of a 9-Month Third-Phase Cardiopulmonary Rehabilitation Program on Cardiopulmonary Function in a Heart Failure Patient
○Wei Chun Liao
Tungs Taichung Metroharbor Hospital
- APP2-6 Acute Effects of Intermittent Pneumatic Compression Therapy in Heart Failure Inpatients With Lower Limb Edema
○Qiao Ying Huang¹, Miao Ju Hsu², Li Han Chen³, En Chia Chang³, Yi Ting Chen³, Ko Long Lin¹
¹Department of Rehabilitation Medicine, Kaohsiung Medical University Hospital, Kaohsiung Medical University, ²Department of Physical Therapy, Kaohsiung Medical University,
³Division of Cardiology, Department of Internal Medicine, Kaohsiung Medical University Hospital, Kaohsiung Medical University

APP2-7 Cardiac Rehabilitation and Cardiovascular Event Prevention in Older Patients:
A Comparison Before, During, and After the COVID-19 Pandemic

○Akihiro Hirashiki, Tatsuya Yoshida, Kakeru Hashimoto, Ikue Ueda,
Takahiro Kamihara, Manabu Kokubo

National Center for Geriatrics and Gerontology

Day 1 July 19 (Sat), 2025

16:35~17:25 Poster Room (1F • Hall B)

AsiaPrevent Poster3 [Physical therapy / Adherence]

Chairs : Shinji Sato (Department of Sports and Medical Science, Medical Technology, Teikyo University)

Ngai Yin Chan (Princess Margaret Hospital)

APP3-8 Comparing Gender Disparities in Enrollment of Cardiac Rehabilitation in a Tertiary Institution

○Jeremy Anne Almadin Alcazar^{1,2}

¹Chong Hua Hospital, ²Cebu South Medical Center

APP3-9 Adherence in Following Phase II Cardiac Rehabilitation among Women in a Tertiary-care Level Hospital: A Retrospective Study

○Leilani Rosalind Picardal Caragos-Merin, Maria Rosan Trani

Chong Hua Hospital, Cebu City

APP3-10 Understanding the Relationship between Atherogenic Index of Plasma and other Risk Factors for Cardiovascular Disease among Police Officers in East Java, Indonesia

○Dwika Rasyid Firmanda, Inna Maya Sufiyah, Meity Ardiana,
Primasitha Maharani Harsoyo

University of Airlangga

APP3-11 INVESTIGATION OF THE EFFECT OF NIGI-NIGI-EXERCISE USING THE SQUEEZABLE TOY ON GRIP STRENGTH IN ELDERLY PEOPLE DURING HOME NURSING VISITS

○Mayu Iwasaka¹, Junji Iwasaka²

¹Waseda-Osaka high school, ²Chokyu Hospital

APP3-12 The relevance between the life span after Transcatheter Aortic Valve Implantation (TAVI) and the result of evaluations measured in rehabilitation during hospitalization

○Taisuke Kuwajima

Shonan kamakura general hospital

APP3-13 The Association Between 6 Minute Walking Distance and Pulmonary Vascular Resistance in Grown-Up Congenital Heart Disease Patients: Analytical Single-center Study in Developing Country

○Pepi Nurapipah, Badai Bhatara Tiksnadi, Achmad Fitrah Khalid,

Anggraeni Wendy Astuti, Charlotte Johanna Cool

Hasan Sadikin Hospital Bandung, Indonesia

APP3-14 Ultrasound Assessment about Improvement of Diaphragm Thickening
After Pulmonary Rehabilitation: A Case Report of a Late Diagnosis of Spinal
Muscular Atrophy Type II Patient with Respiratory Distress Syndrome

○Yung-Liang Chang^{1,2}, Ko-Long Lin^{1,2}

¹ Department of Physical Medicine and Rehabilitation, Kaohsiung Medical University Chung-Ho Memorial Hospital, Kaohsiung, Taiwan, ² School of Medicine, Kaohsiung Medical University, Kaohsiung, Taiwan